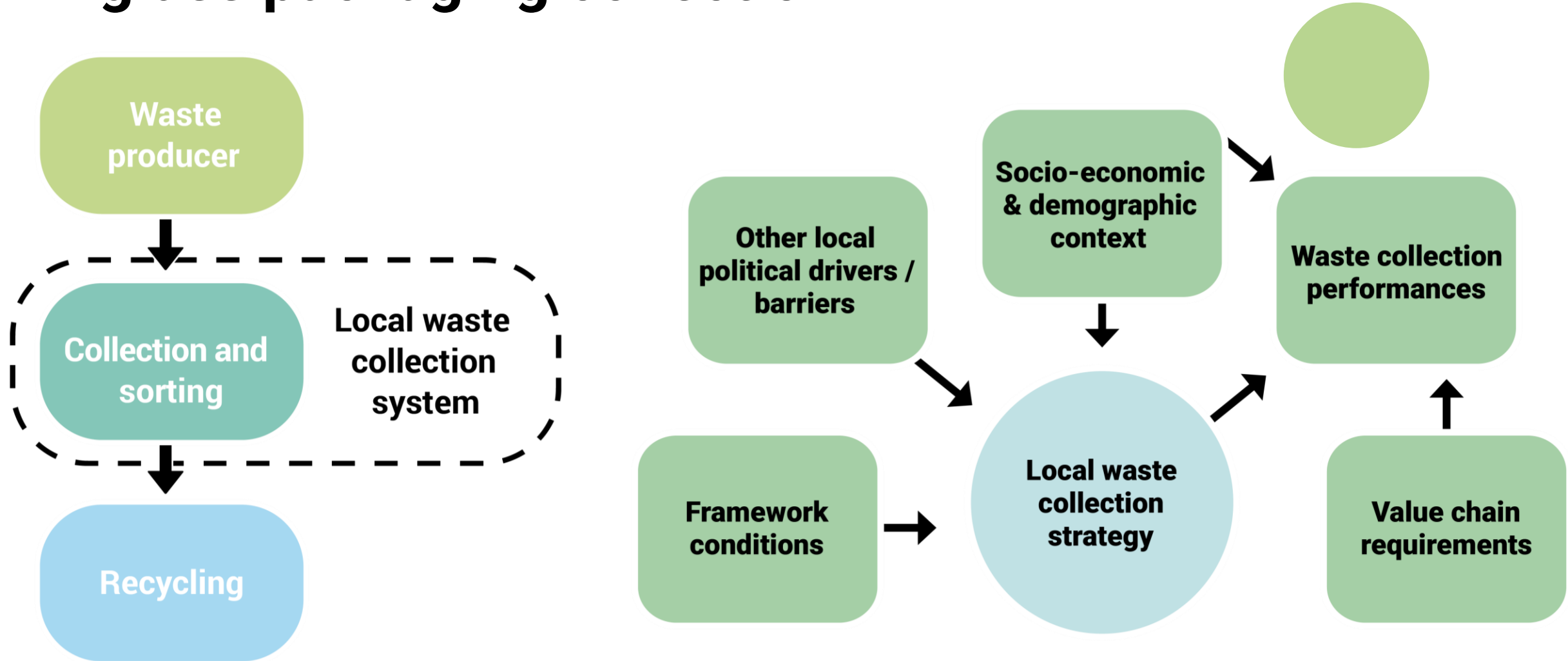


A woman with blonde hair in a ponytail, wearing a striped t-shirt, is shown in profile, holding a clear plastic bottle. A young boy in a blue t-shirt is also holding a clear plastic bottle. They appear to be participating in a recycling activity outdoors. The background shows a building and some greenery. The image has a teal overlay on the left side.

News update

New study: opportunities for municipalities in glass packaging collection



New study: opportunities for municipalities in glass packaging collection

Main conclusions:

1. High diversity of local approaches, reflecting diverse national and regional frameworks
2. Framework conditions are key drivers
3. Main collection systems: bottle-bank & source-separation
4. Variable performances
5. Importance of local context

There is no “ready-to-use” best practice when it comes to glass collection. The improvement of local performances requires tailored strategies following an analysis of the local system, and a continuous improvement together with consistent monitoring.

Full study

Summary

Latest glass collection for recycling statistics revealed...

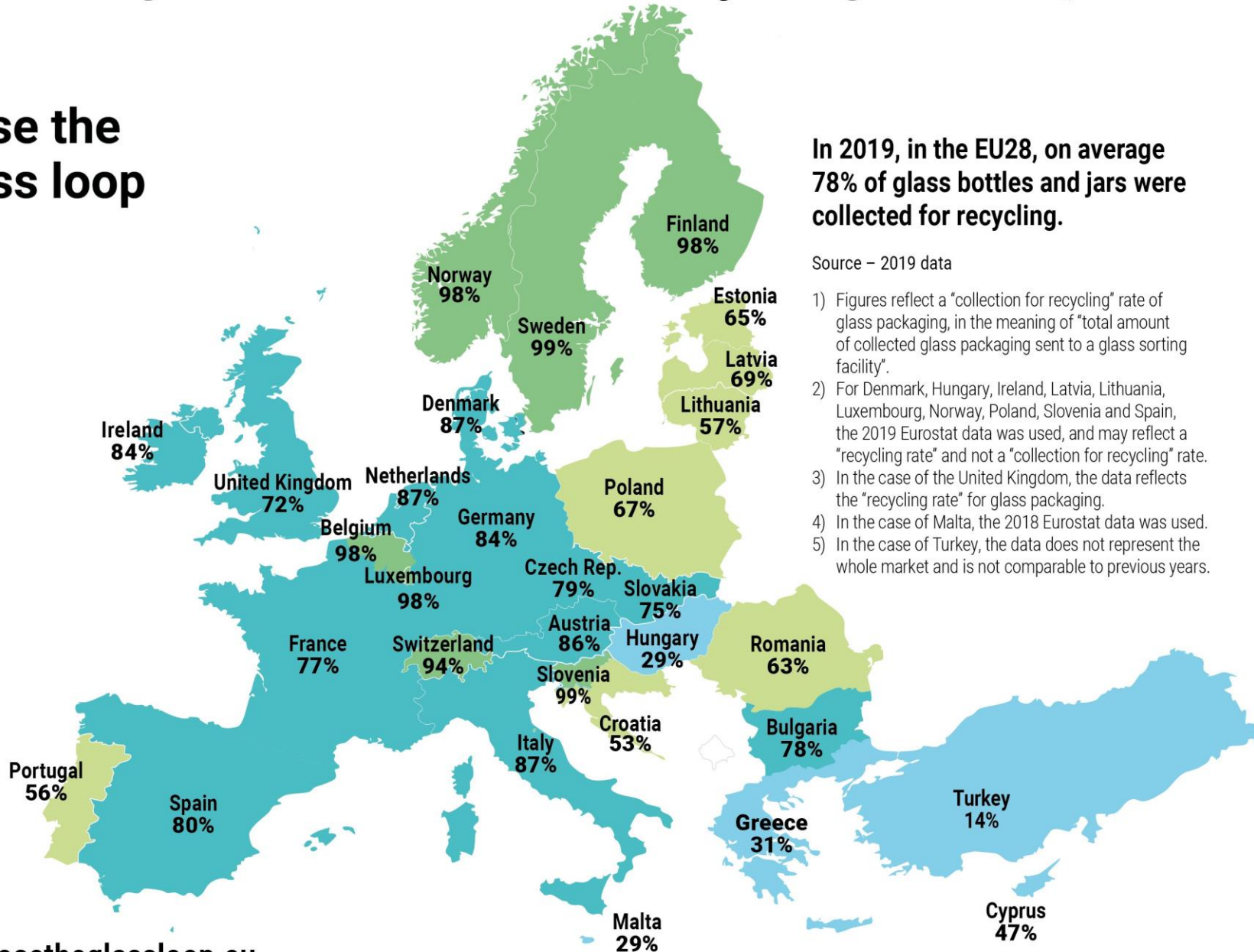
Are we on track?



Container glass collection for recycling in Europe



close the
glass loop



In 2019, in the EU28, on average
**78% of glass bottles and jars were
collected for recycling.**

Source – 2019 data

- 1) Figures reflect a “collection for recycling” rate of glass packaging, in the meaning of “total amount of collected glass packaging sent to a glass sorting facility”.
- 2) For Denmark, Hungary, Ireland, Latvia, Lithuania, Luxembourg, Norway, Poland, Slovenia and Spain, the 2019 Eurostat data was used, and may reflect a “recycling rate” and not a “collection for recycling” rate.
- 3) In the case of the United Kingdom, the data reflects the “recycling rate” for glass packaging.
- 4) In the case of Malta, the 2018 Eurostat data was used.
- 5) In the case of Turkey, the data does not represent the whole market and is not comparable to previous years.

