

Performance of Packaging Glass Recycling in Europe

2024 Report - 2022 Data

Key highlights



**close the
glass loop**



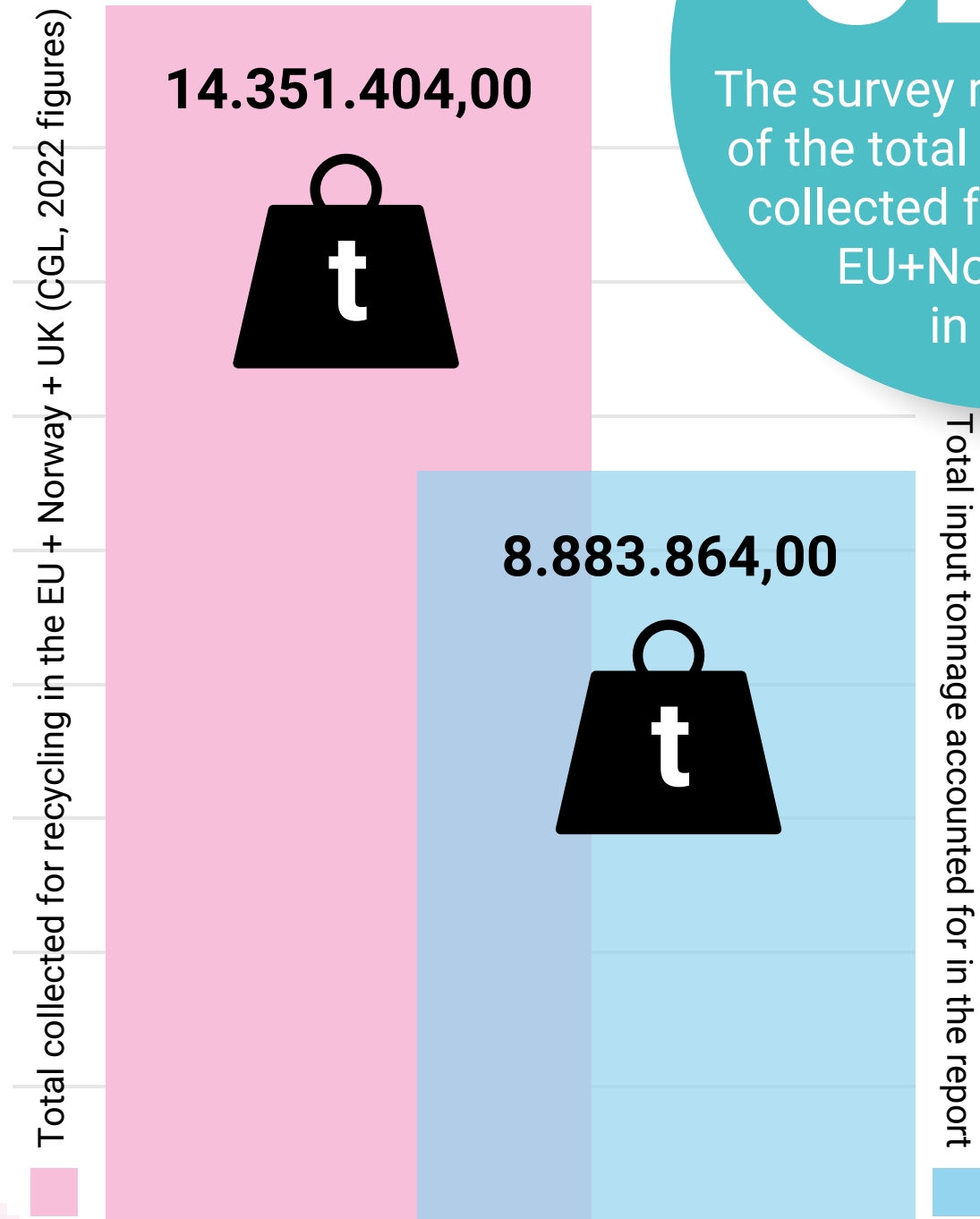
BACKGROUND & METHODOLOGY TO THE REPORT

- Between October 2023 and November 2024, Close the Glass Loop carried out a survey of Glass Cullet Recycling Facilities operating in Europe.
- Glass Cullet Recycling Facilities supply secondary raw materials into the economy by processing glass packaging waste materials. Facilities processing other types of glass waste were excluded from the scope of the survey.
- The survey was sent to operators within the membership of FERVER (European Glass Recyclers' Federation) and FEVE (European Container Glass Federation), and to the 13 National Platforms of Close the Glass Loop.
- The survey was conducted online. 33 responses were received in total. The data represented in this report is valid for the year 2022.
- Respondents were asked to aggregate data for all their operations on national level. Operators with Glass Cullet Recycling Facilities across multiple countries provided individual responses by country.
- Each response was submitted on a voluntary basis and the data gathered was not cross-checked by a third-party. Therefore, the results in this report are indicative only and intended to provide estimates of the performance of packaging glass recycling in Europe.
Results may not be used to perform calculations for Life Cycle Assessment.

An even more representative report



17
IN THE 2023
REPORT



62%
The survey represents 62% of the total available glass collected for recycling in EU+Norway+UK in 2022.

54%
IN THE 2023
REPORT

64
IN THE 2023
REPORT

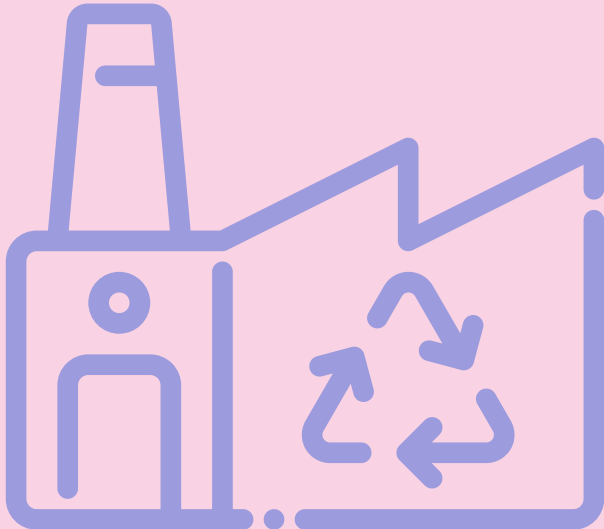


The survey sample accounts for approximately 62% of all glass collected for recycling in EU + UK + Norway (Close the Glass Loop figures, 2022)

Glass recycling is a highly integrated system going from post-consumer municipal waste to high quality secondary raw materials for manufacturing new bottles & jars.

87%

of the total reported input tonnage was **sourced from municipal waste**



93%

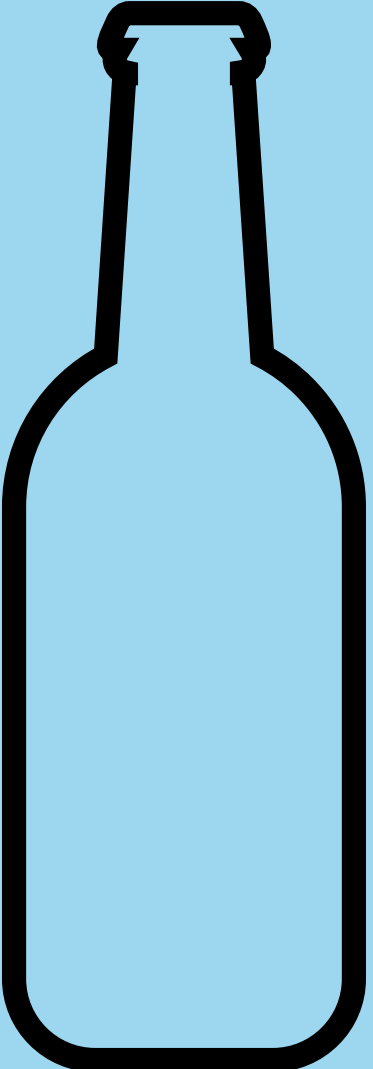
of the total reported input tonnage in the survey was **effectively recycled in 2022**


97%

of the total tonnage effectively recycled was recycled in a glass manufacturing process

92%

of the total tonnage effectively recycled was recycled in a closed loop glass packaging manufacturing process





85%

Estimated performance of closed-loop recycling for collected glass packaging in 2022.

**Full report coming
January 2025.
Stay tuned!**



**close the
glass loop**

